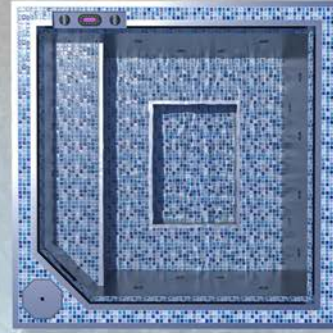


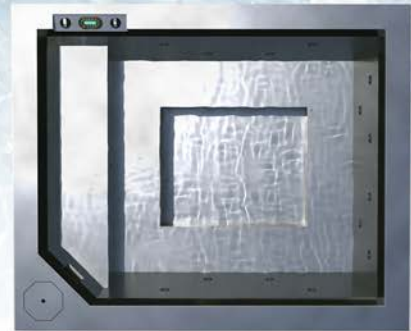
## 770

Capacity: **4 to 6 Adults**  
 Dimensions: **84" x 84" x 41.5"** (includes 6" frame height)  
 Water Volume: **340 Gallons**  
 Spa Weight: **774 lbs. Frame Mounted Equipment**  
**3610 lbs. Total Weight with Water**  
**602 lbs. Shell Only - No Equipment**  
**3438 lbs. Total Weight with Water**



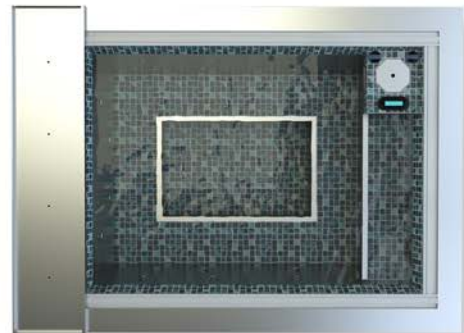
## 786

Capacity: **6 to 8 Adults**  
 Dimensions: **84" x 102" x 41.5"** (includes 6" frame height)  
 Water Volume: **456 Gallons**  
 Spa Weight: **955 lbs. Frame Mounted Equipment**  
**4753 lbs. Total Weight with Water**  
**783 lbs. Shell Only - No Equipment**  
**4581 lbs. Total Weight with Water**



## 797x Automatic Cover

Capacity: **6 to 8 Adults**  
 Dimensions: **84" x 115" x 42.75"** (includes 6" frame height)  
 Water Volume: **410 Gallons**  
 Spa Weight: **1225 lbs. Frame Mounted Equipment**  
**4645 lbs. Total Weight with Water**  
**1025 lbs. Shell Only - No Equipment**  
**4444 lbs. Total Weight with Water**



### Features On All Models

Water Depth: **30" overall / 18" bench depth**  
**12" bench seat to spa floor**  
 Shell Material: **Stainless Steel**  
 Frame: **Fully integrated stainless steel frame**  
 Shell Insulation: **Closed cell high density urethane foam**  
 Jets: **16 high output stainless steel jets**  
 Drain: **VGBA compliant stainless steel collection port**  
 Seats: **13" wide bench "open plan" seating on all four sides**  
 Lighting: **(1) LED underwater color wheel light / low voltage**  
 Finish: **Tile Trim:** tile top lip, waterline, floor, steps, and benches  
**Stainless Steel:** #2 non-directional buffed on walls, benches, foot-well, and step risers  
**Full Tile:** all interior surfaces; optional Top-lip  
 Optional: **Automatic water level control system (standard on 797x)**  
 Certifications: **IAPMO Certified, VGBA Compliant, AWS Certified Welding**  
 Warranty: **25-years structural stainless steel shell,**  
**5-years tile adhesion, 1-year plumbing,**  
**3-years Pentair components (parts and labor)**



**BRADFORD**

[www.BradfordHome.com](http://www.BradfordHome.com)



## Standard Tile :: Signature Series Spas



Aqua Black - 1 x 1



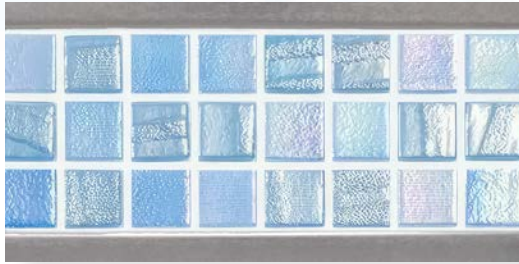
Calcutta Matte - 1 x 1



Nature Air Force - 1 x 2 *Brick Layout*



Nature Pearl River - 1 x 2 *Brick Layout*



Fusion Light Blue - 1 x 1



Fusion Grey - 1 x 1



Antarctica Cold - 1 x 1



Supreme Marquina - 1 x 1



All Stainless Steel  
#2 buffed, non-directional finish.

Custom Tile options available. Contact your sales representative for more information.



BRADFORD

[www.BradfordHome.com](http://www.BradfordHome.com)

### 2-Speed Pump Equipment Package

## Frame Mount

**Frame-mounted** equipment package integrated beneath the stairs of the vessel.

<i>Electric Heater</i>	<b>5.5 kW</b> Balboa Control Platform <b>5.5 kW</b> Auxiliary Heater ( <i>11 kW overall</i> )
<i>Operation</i>	Balboa Touchscreen Controller Wi-Fi Control / App Based
<i>Pumps</i>	2-Speed Waterway Executive <b>3hp</b> 1-Speed Circulating Pump
<i>Filtration</i>	<b>100sq.ft.</b> Cartridge Filter Hydroxyl Generator with UV-C and Ozone Sterilization

#### Electrical Power Requirements

Service #1	Control System with <b>5.5 kW</b> Heater <b>120v/230v</b> , Single Phase, <b>40 Amp</b> Requires <b>50 Amp</b> GFCI Circuit
Service #2	Auxiliary <b>5.5 kW</b> Heater <b>230v</b> , Single Phase, <b>23 Amp</b> Requires <b>30 Amp</b> GFCI Circuit

### Variable Speed Pump Equipment Package

## Remote Equipment

**Pentair remote equipment** package to be installed within 50 feet of the vessel.

<i>Electric Heater</i>	<b>11 kW</b> Raypak
<i>Operation</i>	Pentair Spa-Side Controller Pentair Intellicenter Control Center, Home Automation & Wi-Fi Ready App Based / Web Based
<i>Pumps</i>	Pentair Intelliflo Variable Speed <b>3hp</b>
<i>Filtration</i>	<b>100sq.ft.</b> Cartridge Filter Hydroxyl Generator With UV-C and Ozone Sterilization

#### Electrical Power Requirements

Service #1	<b>120v/230v</b> , Single Phase, <b>83 Amp</b> Requires <b>105 Amp</b> GFCI Circuit
------------	--

#### NOTES:

- For **208v** service, a buck-boost transformer must be supplied and installed by others.
- Automatic cover requires a separate **120v/230v**, single phase, **15Amp** GFCI.
- Automatic water level control system requires a separate **120v/230v**, single phase **15Amp** GFCI.
- Freeze protection of potable water supply by others.
- **18kw** electric heaters are available for frame mount and remote equipment packages.
- **27kw** electric heaters and gas heaters are also available for remote equipment packages.

#### IMPORTANT:

All onsite electrical connections **MUST** be performed by a licensed electrical contractor, to meet or exceed local and state codes.



BRADFORD

[www.BradfordHome.com](http://www.BradfordHome.com)





## Spa Skirting Kit

*Frame Material:* **Stainless Steel** sub-frame and corner detail

*Skirt Material:* Customer supplied - Skirting kit is designed to fit standard sized natural and synthetic deck boards.

*Installation:* The assembled skirt panels are mechanically fastened with four screws on each side, allowing for easy access to plumbing and equipment.

*NOTE:* The kit contains mounting brackets, panel stiffeners, four corner trim pieces, and required mechanical hardware. Customer will supply the desired wood or other material and assemble the sub-frames before attaching the skirt sides. The skirting kit will also accept backer boards for the installation of tile, stone or other finishes.



BRADFORD

[www.BradfordHome.com](http://www.BradfordHome.com)



**54" Spa Steps** - with (2) Internal Supports  
2x4 - Bracing Stud (shown above)

## Spa Step Kit

- Frame Material:** **Stainless Steel** end caps and internal supports.
- Step Material:** Customer supplied - Step kits are designed to fit standard sized natural and synthetic deck boards.
- Size (width):** Available in widths up to... **36" / 54" / 72" / 90"**
- Installation:** The steps are assembled to suit the desired width (*above*). There will be 2 end caps and 1, 2, 3, or 4 internal supports depending on your desired stair width. The included mechanical hardware fixes the boards to the end caps and internal supports.
- NOTE:** The kit contains left and right end caps and internal supports. Customer will supply the desired wood and assemble the step kits. The additional bracing stud is a standard treated 2x4 supplied by the customer.

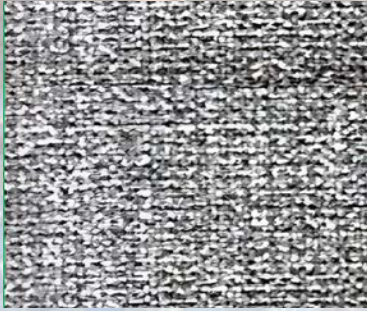


**BRADFORD**

[www.BradfordHome.com](http://www.BradfordHome.com)



## Vinyl Colors



*Dove*



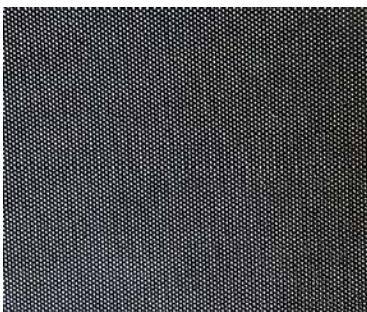
*Khaki*



*Slate*



*Walnut*



## Vinyl Color & Sun Tech Color

*Black*



## Deluxe VINYL & SUN TECH FABRIC SPA COVERS

Added strength and durability make the Deluxe spa cover a great value. The Deluxe cover has a 6 mil. vapor wrap and fiberglass reinforced strapping on 1' centers. The Deluxe cover is available in your choice of five vinyl colors, and one Sun Tech and features a three-year warranty. The Deluxe cover meets or exceeds all A.S.T.M safety standards.

*Material:* Marine-grade vinyl fabric treated with mildew and UV inhibitors.

*Taper:* **4" - 2"**

*R-Value:* **14**

*Construction:* High density 2lb foam core.  
6 mil. Vapor wrap.

3" heat seal skirt gaskets.

4 locking hardware connections,

2 Fiberglass reinforced handles.

Compliance to ASTM Standards for safety covers.

Galvanized C-channel at the hinge.

Heat lock hinge design.



**BRADFORD**

[www.BradfordHome.com](http://www.BradfordHome.com)

\*Cover colors displayed are for reference only and may appear differently on computer screens and in print.



White

Terracotta

Aqua

Black

Brown

Charcoal Gray

Green

Light Blue

Navy Blue

Royal Blue

Silver Gray

Tan



## BE-LITE ALUMINUM COVERS

Be-Lite spa covers combine an inner foam core sandwiched between two aluminum layers. The cover is a full 2" thick for added insulating value. The top and bottom surfaces are silver aluminum with a baked on enamel painted finish. The outer edge of the cover is anodized for long lasting beauty.

Be-Lite covers exceed the ASTM Standard for a safety spa cover (sticker upon request). They will not collapse or sink in the middle.

*Material:* Aluminum

*Style:* 770 spa - 2 panel

786 & 797x spa - 3 panel

*Taper:* **Flat** - no taper

*R-Value:* **12-14**

*Construction:* Triple-sealed expanded polystyrene foam core.  
Nylon webbing straps with locking clips.  
Protected by a limited  
Manufacturer's Warranty.  
UL Rated.



BRADFORD

[www.BradfordHome.com](http://www.BradfordHome.com)

\*Cover colors displayed are for reference only and may appear differently on computer screens and in print.





Designer Colors (below)



## HYDRAMATIC AUTOMATIC COVERS for 797x

The Hydramatic cover by Aquamatic, has fewer moving parts than any other system in production. Fewer moving parts means fewer parts to fatigue and breakdown. Designed to last the lifetime of your pool or spa, the Hydramatic is low maintenance and very reliable.

*Material:* Aluminum, Stainless Steel & Vinyl

*Size:* Customized to spa dimensions

*Taper:* N/A - cover is rolled onto spindle

*R-Value:* NOT considered an insulating cover

*Construction:* Unique, waterproof, all-fluid dual drive.

Patented trouble-free Leading Edge slider system and cable compensating device.

Stainless steel cover housing.

20 year limited warranty on the mechanism.

7 year limited warranty on the cover fabric.

- 11 Standard color choices, 6 Designer colors available for an up-charge.
- No electric components near the pool. Powerpack (pump) can be placed up to 150' away.
- Quick and easy to open - travels approximately 1foot per second.
- Leaves and debris are collected when the cover is opened to remove rainwater.
- Saves money on chemicals, energy, and water loss from evaporation.
- Pressure relief valves gently stop cover at end of travel



BRADFORD

[www.BradfordHome.com](http://www.BradfordHome.com)

\*Cover colors displayed are for reference only and may appear differently on computer screens and in print.